

**Actual Size Template (Side 1)**  
**The Well-Dressed Dog**

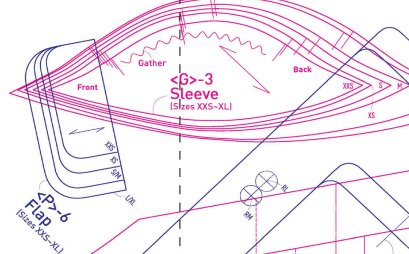


- > Back Top-1 Front bodice piece, 2 Back bodice piece
- > Gathered Dress-1 Front bodice, 1 Back bodice, 1 Skirt
- > Tube Dress-1 Front bodice, 2 Back bodice
- > Cap Sleeve Top-1 Front bodice, 2 Back bodice, 3 Sleeve, 4 Pocket, 8 Front button placket
- > Tee Coat-1 Front bodice, 4 Facing, 8 Collar, 4 Fly, 7 Sleeve top
- > All back bodice and sleeve pieces are on side 2
- > Cape-1 Bodice, 2 Top collar, 3 Under collar, 4 Tab
- > Chenille Vest-1 Front bodice, 2 Back bodice

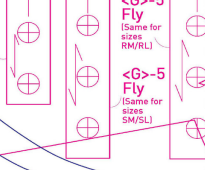
\* The templates do not include seam allowances. Please refer to P&A and cutting diagrams that are part of the instructions for seam allowance information.  
 \* The templates range in size from XS-XL. The projects like back, the size range will be between 2 and 31. For sizing information, please refer to P.33.

©2016 Sewing Patterns Direct. All rights reserved. Sewing Patterns Direct is a trademark of Sewing Patterns Direct. All rights reserved.

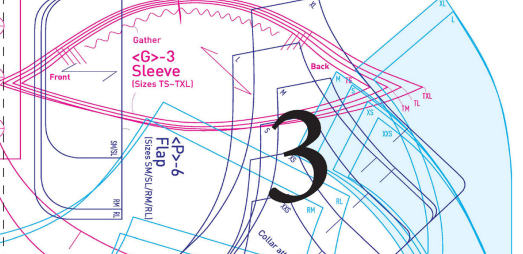
**1**



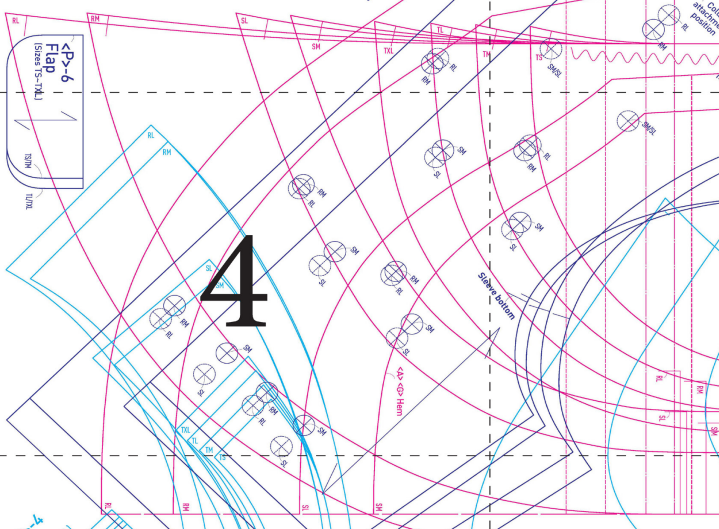
**2**



**3**



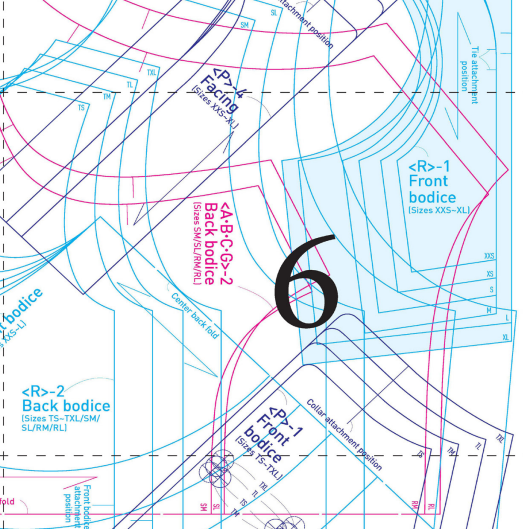
**4**



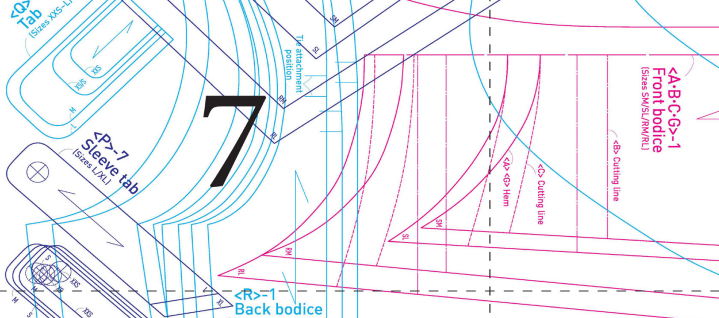
**5**



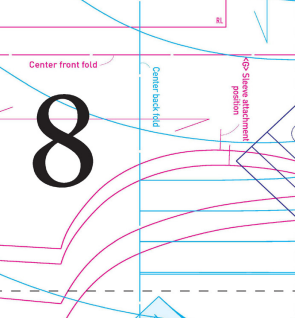
**6**



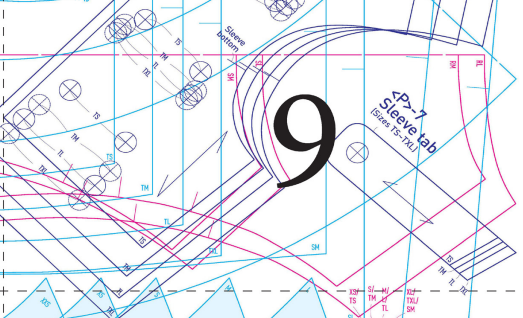
**7**



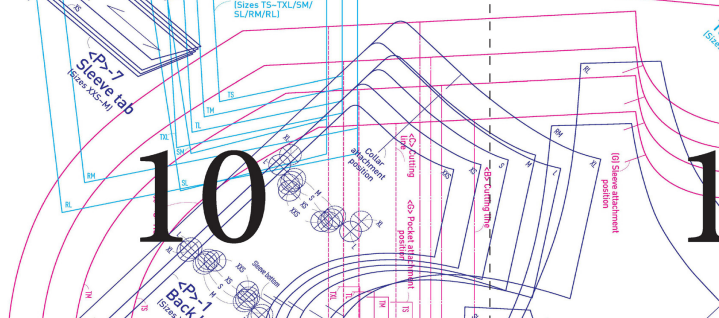
**8**



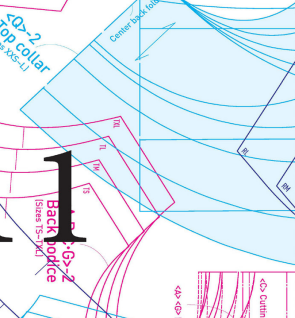
**9**



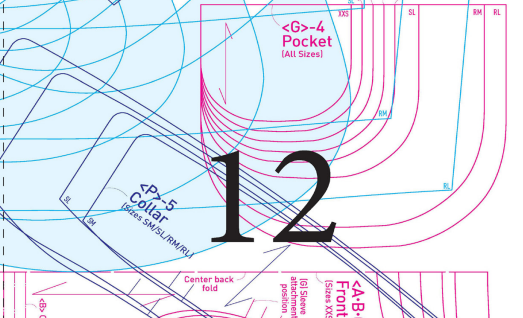
**10**



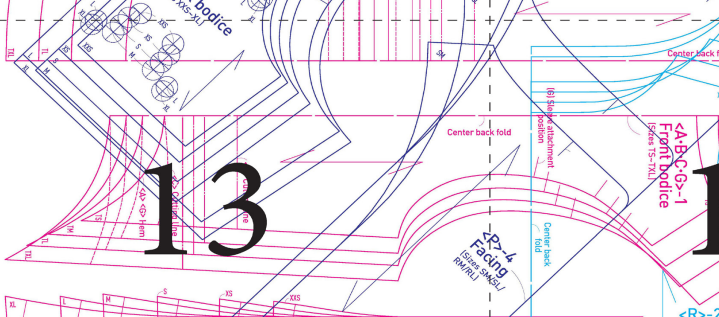
**11**



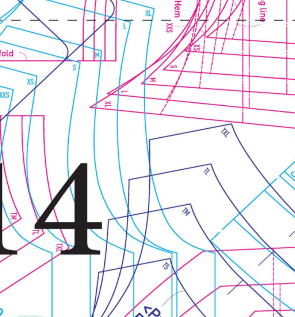
**12**



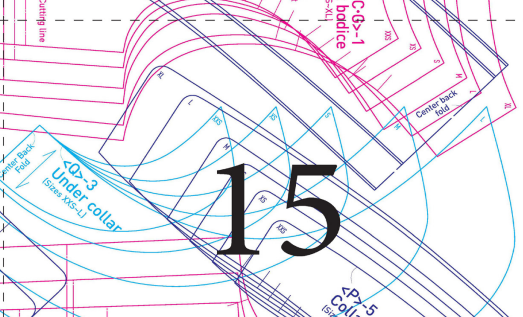
**13**



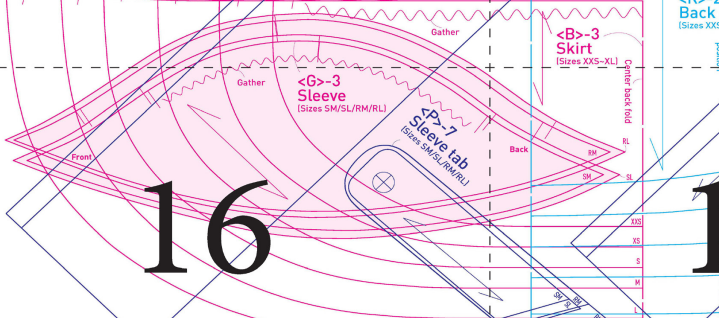
**14**



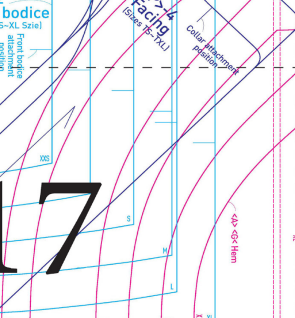
**15**



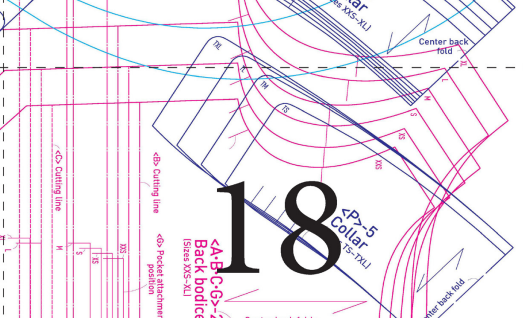
**16**



**17**



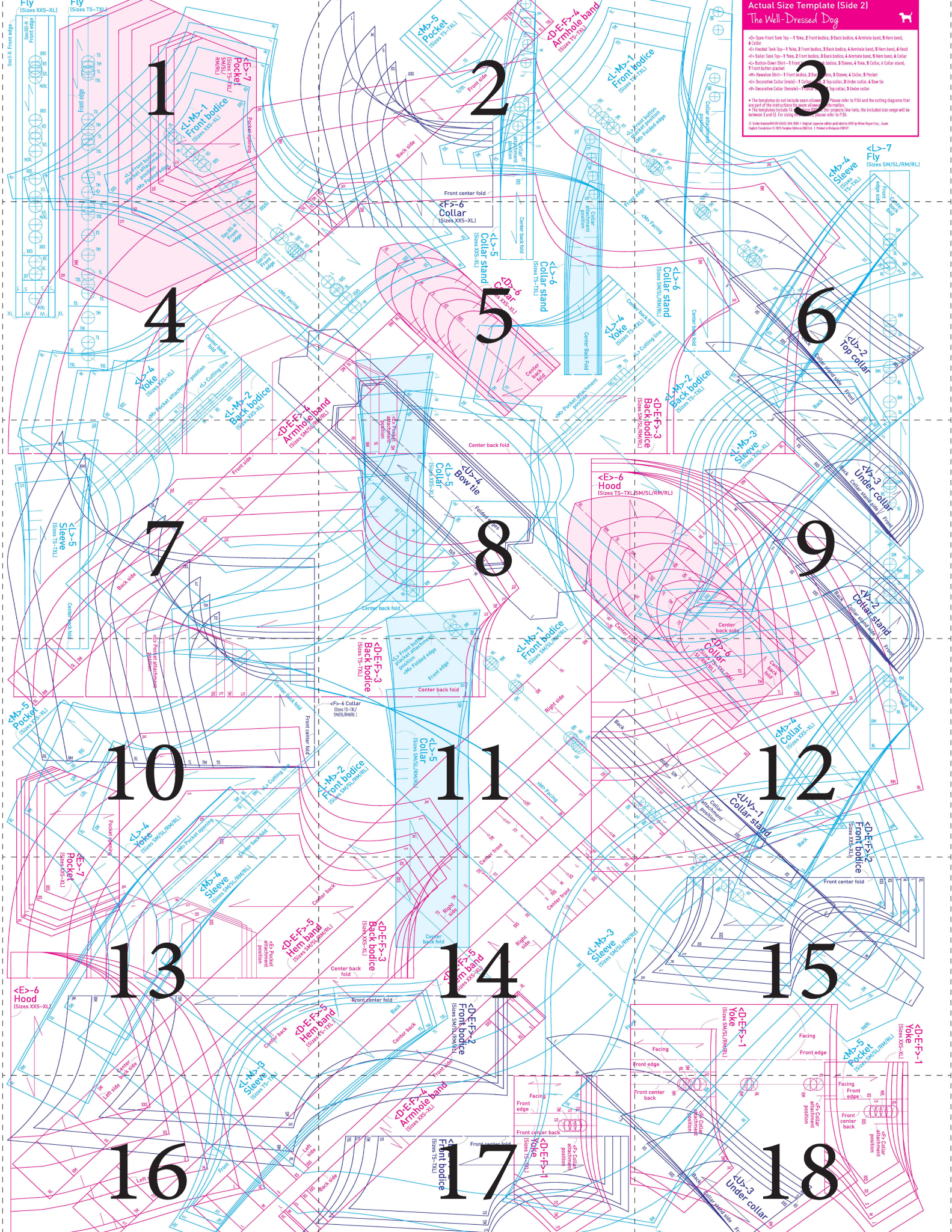
**18**



**Actual Size Template (Side 2)**  
**The Well-Dressed Dog**

- <D>E-F-1 Yoke (Sizes XS-XL)
- <D>E-F-2 Front bodice (Sizes XS-XL)
- <D>E-F-3 Back bodice (Sizes XS-XL)
- <D>E-F-4 Armhole band (Sizes XS-XL)
- <D>E-F-5 Hem band (Sizes XS-XL)
- <D>E-F-6 Hood (Sizes XS-XL)
- <D>E-F-7 Pocket (Sizes XS-XL)
- <D>E-F-8 Collar (Sizes XS-XL)
- <D>E-F-9 Collar stand (Sizes XS-XL)
- <D>E-F-10 Yoke (Sizes XS-XL)
- <D>E-F-11 Front bodice (Sizes XS-XL)
- <D>E-F-12 Back bodice (Sizes XS-XL)
- <D>E-F-13 Sleeve (Sizes XS-XL)
- <D>E-F-14 Collar (Sizes XS-XL)
- <D>E-F-15 Collar stand (Sizes XS-XL)
- <D>E-F-16 Yoke (Sizes XS-XL)
- <D>E-F-17 Front bodice (Sizes XS-XL)
- <D>E-F-18 Back bodice (Sizes XS-XL)
- <D>E-F-19 Sleeve (Sizes XS-XL)
- <D>E-F-20 Collar (Sizes XS-XL)
- <D>E-F-21 Collar stand (Sizes XS-XL)
- <D>E-F-22 Yoke (Sizes XS-XL)
- <D>E-F-23 Front bodice (Sizes XS-XL)
- <D>E-F-24 Back bodice (Sizes XS-XL)
- <D>E-F-25 Sleeve (Sizes XS-XL)
- <D>E-F-26 Collar (Sizes XS-XL)
- <D>E-F-27 Collar stand (Sizes XS-XL)
- <D>E-F-28 Yoke (Sizes XS-XL)
- <D>E-F-29 Front bodice (Sizes XS-XL)
- <D>E-F-30 Back bodice (Sizes XS-XL)
- <D>E-F-31 Sleeve (Sizes XS-XL)
- <D>E-F-32 Collar (Sizes XS-XL)
- <D>E-F-33 Collar stand (Sizes XS-XL)
- <D>E-F-34 Yoke (Sizes XS-XL)
- <D>E-F-35 Front bodice (Sizes XS-XL)
- <D>E-F-36 Back bodice (Sizes XS-XL)
- <D>E-F-37 Sleeve (Sizes XS-XL)
- <D>E-F-38 Collar (Sizes XS-XL)
- <D>E-F-39 Collar stand (Sizes XS-XL)
- <D>E-F-40 Yoke (Sizes XS-XL)
- <D>E-F-41 Front bodice (Sizes XS-XL)
- <D>E-F-42 Back bodice (Sizes XS-XL)
- <D>E-F-43 Sleeve (Sizes XS-XL)
- <D>E-F-44 Collar (Sizes XS-XL)
- <D>E-F-45 Collar stand (Sizes XS-XL)
- <D>E-F-46 Yoke (Sizes XS-XL)
- <D>E-F-47 Front bodice (Sizes XS-XL)
- <D>E-F-48 Back bodice (Sizes XS-XL)
- <D>E-F-49 Sleeve (Sizes XS-XL)
- <D>E-F-50 Collar (Sizes XS-XL)
- <D>E-F-51 Collar stand (Sizes XS-XL)
- <D>E-F-52 Yoke (Sizes XS-XL)
- <D>E-F-53 Front bodice (Sizes XS-XL)
- <D>E-F-54 Back bodice (Sizes XS-XL)
- <D>E-F-55 Sleeve (Sizes XS-XL)
- <D>E-F-56 Collar (Sizes XS-XL)
- <D>E-F-57 Collar stand (Sizes XS-XL)
- <D>E-F-58 Yoke (Sizes XS-XL)
- <D>E-F-59 Front bodice (Sizes XS-XL)
- <D>E-F-60 Back bodice (Sizes XS-XL)
- <D>E-F-61 Sleeve (Sizes XS-XL)
- <D>E-F-62 Collar (Sizes XS-XL)
- <D>E-F-63 Collar stand (Sizes XS-XL)
- <D>E-F-64 Yoke (Sizes XS-XL)
- <D>E-F-65 Front bodice (Sizes XS-XL)
- <D>E-F-66 Back bodice (Sizes XS-XL)
- <D>E-F-67 Sleeve (Sizes XS-XL)
- <D>E-F-68 Collar (Sizes XS-XL)
- <D>E-F-69 Collar stand (Sizes XS-XL)
- <D>E-F-70 Yoke (Sizes XS-XL)
- <D>E-F-71 Front bodice (Sizes XS-XL)
- <D>E-F-72 Back bodice (Sizes XS-XL)
- <D>E-F-73 Sleeve (Sizes XS-XL)
- <D>E-F-74 Collar (Sizes XS-XL)
- <D>E-F-75 Collar stand (Sizes XS-XL)
- <D>E-F-76 Yoke (Sizes XS-XL)
- <D>E-F-77 Front bodice (Sizes XS-XL)
- <D>E-F-78 Back bodice (Sizes XS-XL)
- <D>E-F-79 Sleeve (Sizes XS-XL)
- <D>E-F-80 Collar (Sizes XS-XL)
- <D>E-F-81 Collar stand (Sizes XS-XL)
- <D>E-F-82 Yoke (Sizes XS-XL)
- <D>E-F-83 Front bodice (Sizes XS-XL)
- <D>E-F-84 Back bodice (Sizes XS-XL)
- <D>E-F-85 Sleeve (Sizes XS-XL)
- <D>E-F-86 Collar (Sizes XS-XL)
- <D>E-F-87 Collar stand (Sizes XS-XL)
- <D>E-F-88 Yoke (Sizes XS-XL)
- <D>E-F-89 Front bodice (Sizes XS-XL)
- <D>E-F-90 Back bodice (Sizes XS-XL)
- <D>E-F-91 Sleeve (Sizes XS-XL)
- <D>E-F-92 Collar (Sizes XS-XL)
- <D>E-F-93 Collar stand (Sizes XS-XL)
- <D>E-F-94 Yoke (Sizes XS-XL)
- <D>E-F-95 Front bodice (Sizes XS-XL)
- <D>E-F-96 Back bodice (Sizes XS-XL)
- <D>E-F-97 Sleeve (Sizes XS-XL)
- <D>E-F-98 Collar (Sizes XS-XL)
- <D>E-F-99 Collar stand (Sizes XS-XL)
- <D>E-F-100 Yoke (Sizes XS-XL)

\* The templates do not include seam allowances. Please refer to P&S and the cutting diagrams that are part of the instructions for more information.  
 \* The templates include 1/4" seam allowances for projects like hats, the included size range will be between 1/4" and 1/2".  
 \* © 2014 Sewing.com LLC. All rights reserved. Please refer to P&S and the cutting diagrams that are part of the instructions for more information.  
 \* English Translation © 2017 Pattern Library LLC. 1. Pattern © 2017 Pattern Library LLC.



**Actual Size Template (Side 3)**  
**The Well-Dressed Dog** 

- <H-I-J-K>-1 Front bodice, 2 Back bodice, 3 Sleeve, 4 Neckband, 5 Sleeve band, 6 Hem band
- <H-I-J-K>-1-1 Front bodice, 2 Back bodice, 3 Sleeve, 4 Neckband, 5 Sleeve band, 6 Hem band
- <H-I-J-K>-1-2 Front bodice, 2 Back bodice, 3 Sleeve, 4 Neckband, 5 Sleeve band, 6 Hem band, 7 Flap, 8 Pocket
- <H-I-J-K>-1-3 Front bodice, 2 Back bodice, 3 Sleeve, 4 Neckband, 5 Sleeve band, 6 Hem band, 7 Flap, 8 Pocket, 9 Pocket
- <H-I-J-K>-1-4 Front bodice, 2 Back bodice, 3 Sleeve, 4 Neckband, 5 Sleeve band, 6 Hem band, 7 Flap, 8 Pocket, 9 Pocket, 10 Side pocket, 11 Side pocket facing
- <H-I-J-K>-1-5 Front bodice, 2 Back bodice, 3 Sleeve, 4 Neckband, 5 Sleeve band, 6 Hem band, 7 Flap, 8 Pocket, 9 Pocket, 10 Side pocket, 11 Side pocket facing, 12 Pocket
- <H-I-J-K>-1-6 Front bodice, 2 Back bodice, 3 Sleeve, 4 Neckband, 5 Sleeve band, 6 Hem band, 7 Flap, 8 Pocket, 9 Pocket, 10 Side pocket, 11 Side pocket facing, 12 Pocket, 13 Pocket
- <H-I-J-K>-1-7 Front bodice, 2 Back bodice, 3 Sleeve, 4 Neckband, 5 Sleeve band, 6 Hem band, 7 Flap, 8 Pocket, 9 Pocket, 10 Side pocket, 11 Side pocket facing, 12 Pocket, 13 Pocket, 14 Pocket
- <H-I-J-K>-1-8 Front bodice, 2 Back bodice, 3 Sleeve, 4 Neckband, 5 Sleeve band, 6 Hem band, 7 Flap, 8 Pocket, 9 Pocket, 10 Side pocket, 11 Side pocket facing, 12 Pocket, 13 Pocket, 14 Pocket, 15 Pocket
- <H-I-J-K>-1-9 Front bodice, 2 Back bodice, 3 Sleeve, 4 Neckband, 5 Sleeve band, 6 Hem band, 7 Flap, 8 Pocket, 9 Pocket, 10 Side pocket, 11 Side pocket facing, 12 Pocket, 13 Pocket, 14 Pocket, 15 Pocket, 16 Pocket
- <H-I-J-K>-1-10 Front bodice, 2 Back bodice, 3 Sleeve, 4 Neckband, 5 Sleeve band, 6 Hem band, 7 Flap, 8 Pocket, 9 Pocket, 10 Side pocket, 11 Side pocket facing, 12 Pocket, 13 Pocket, 14 Pocket, 15 Pocket, 16 Pocket, 17 Pocket
- <H-I-J-K>-1-11 Front bodice, 2 Back bodice, 3 Sleeve, 4 Neckband, 5 Sleeve band, 6 Hem band, 7 Flap, 8 Pocket, 9 Pocket, 10 Side pocket, 11 Side pocket facing, 12 Pocket, 13 Pocket, 14 Pocket, 15 Pocket, 16 Pocket, 17 Pocket, 18 Pocket
- <H-I-J-K>-1-12 Front bodice, 2 Back bodice, 3 Sleeve, 4 Neckband, 5 Sleeve band, 6 Hem band, 7 Flap, 8 Pocket, 9 Pocket, 10 Side pocket, 11 Side pocket facing, 12 Pocket, 13 Pocket, 14 Pocket, 15 Pocket, 16 Pocket, 17 Pocket, 18 Pocket, 19 Pocket
- <H-I-J-K>-1-13 Front bodice, 2 Back bodice, 3 Sleeve, 4 Neckband, 5 Sleeve band, 6 Hem band, 7 Flap, 8 Pocket, 9 Pocket, 10 Side pocket, 11 Side pocket facing, 12 Pocket, 13 Pocket, 14 Pocket, 15 Pocket, 16 Pocket, 17 Pocket, 18 Pocket, 19 Pocket, 20 Pocket
- <H-I-J-K>-1-14 Front bodice, 2 Back bodice, 3 Sleeve, 4 Neckband, 5 Sleeve band, 6 Hem band, 7 Flap, 8 Pocket, 9 Pocket, 10 Side pocket, 11 Side pocket facing, 12 Pocket, 13 Pocket, 14 Pocket, 15 Pocket, 16 Pocket, 17 Pocket, 18 Pocket, 19 Pocket, 20 Pocket, 21 Pocket
- <H-I-J-K>-1-15 Front bodice, 2 Back bodice, 3 Sleeve, 4 Neckband, 5 Sleeve band, 6 Hem band, 7 Flap, 8 Pocket, 9 Pocket, 10 Side pocket, 11 Side pocket facing, 12 Pocket, 13 Pocket, 14 Pocket, 15 Pocket, 16 Pocket, 17 Pocket, 18 Pocket, 19 Pocket, 20 Pocket, 21 Pocket, 22 Pocket
- <H-I-J-K>-1-16 Front bodice, 2 Back bodice, 3 Sleeve, 4 Neckband, 5 Sleeve band, 6 Hem band, 7 Flap, 8 Pocket, 9 Pocket, 10 Side pocket, 11 Side pocket facing, 12 Pocket, 13 Pocket, 14 Pocket, 15 Pocket, 16 Pocket, 17 Pocket, 18 Pocket, 19 Pocket, 20 Pocket, 21 Pocket, 22 Pocket, 23 Pocket
- <H-I-J-K>-1-17 Front bodice, 2 Back bodice, 3 Sleeve, 4 Neckband, 5 Sleeve band, 6 Hem band, 7 Flap, 8 Pocket, 9 Pocket, 10 Side pocket, 11 Side pocket facing, 12 Pocket, 13 Pocket, 14 Pocket, 15 Pocket, 16 Pocket, 17 Pocket, 18 Pocket, 19 Pocket, 20 Pocket, 21 Pocket, 22 Pocket, 23 Pocket, 24 Pocket
- <H-I-J-K>-1-18 Front bodice, 2 Back bodice, 3 Sleeve, 4 Neckband, 5 Sleeve band, 6 Hem band, 7 Flap, 8 Pocket, 9 Pocket, 10 Side pocket, 11 Side pocket facing, 12 Pocket, 13 Pocket, 14 Pocket, 15 Pocket, 16 Pocket, 17 Pocket, 18 Pocket, 19 Pocket, 20 Pocket, 21 Pocket, 22 Pocket, 23 Pocket, 24 Pocket, 25 Pocket

© 2013 Pattern Solutions, LLC. All rights reserved. Pattern Solutions, LLC is a registered trademark of Pattern Solutions, LLC. All other trademarks are the property of their respective owners.

**1**

**2**

**3**

**4**

**5**

**6**

**7**

**8**

**9**

**10**

**11**

**12**

**13**

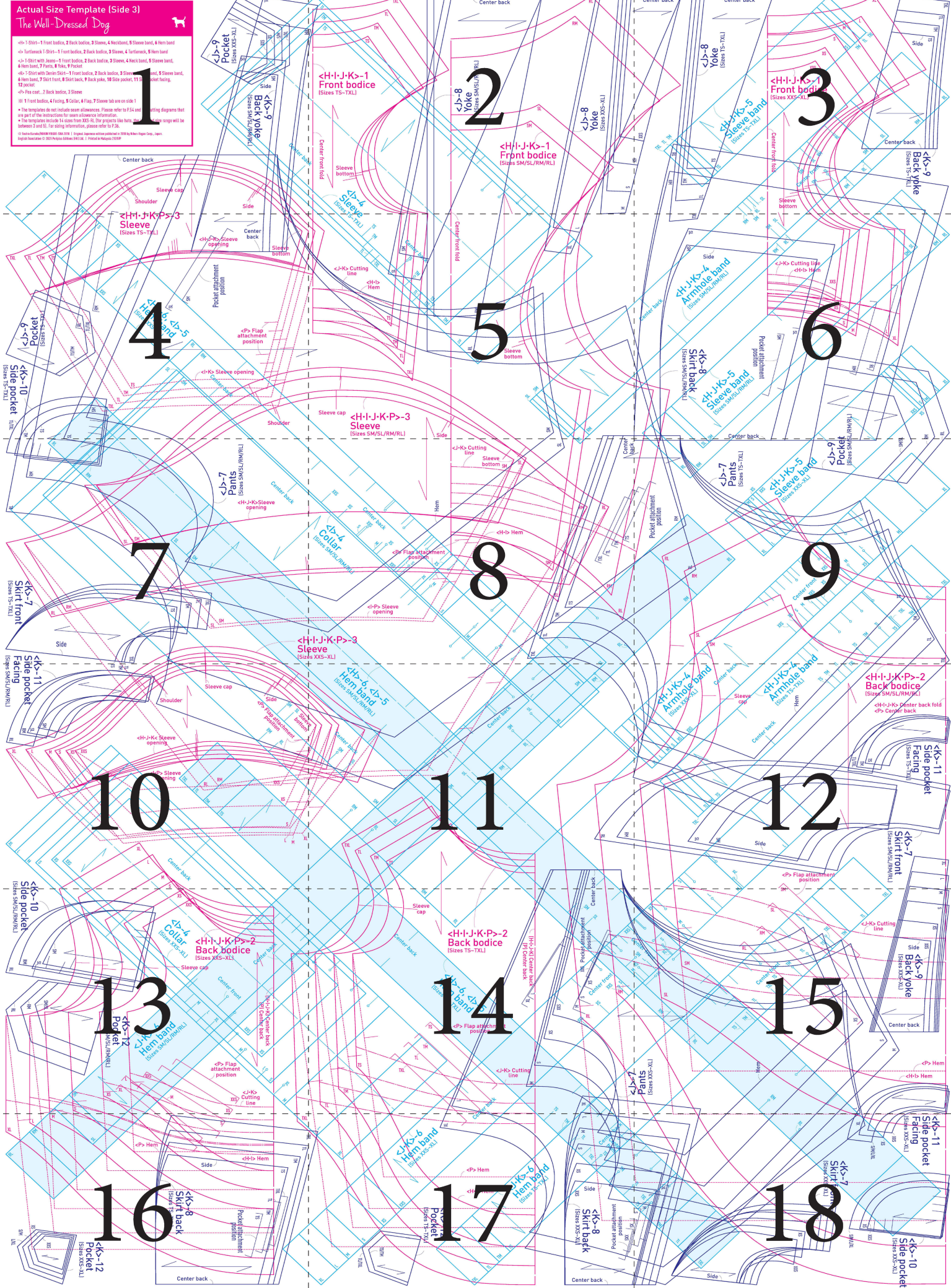
**14**

**15**

**16**

**17**

**18**



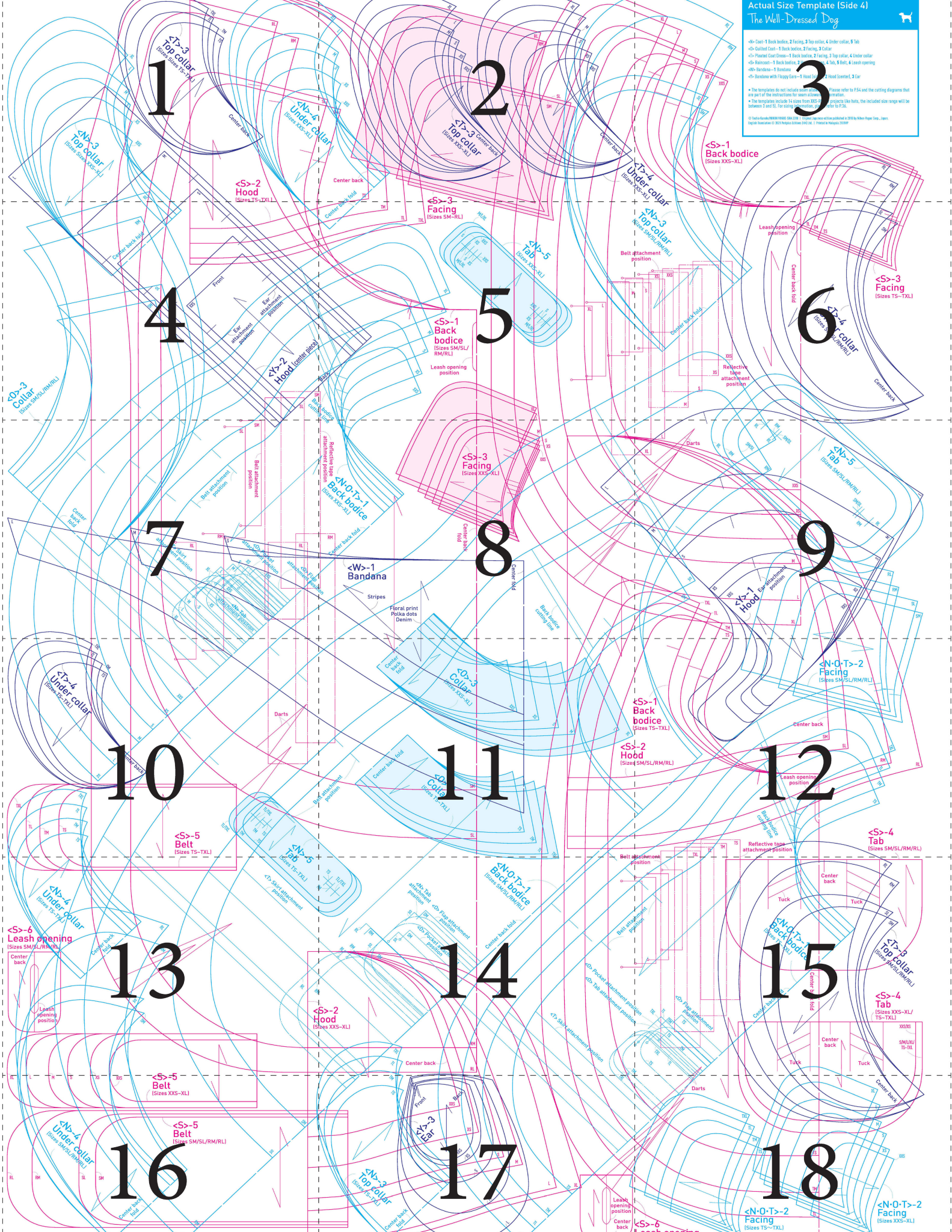
**Actual Size Template (Side 4)**  
The Well-Dressed Dog



- <S>-1 Back bodice (Sizes XXS-XL)
- <S>-2 Hood (Sizes TS-TXL)
- <S>-3 Facing (Sizes SM-SL)
- <S>-4 Tab (Sizes SM/SL/RM/RL)
- <S>-5 Belt (Sizes TS-TXL)
- <S>-6 Leash opening (Sizes SM/SL/RM/RL)
- <T>-3 Top collar (Sizes XS-XL)
- <U>-4 Under collar (Sizes XS-XL)
- <N>-0-T-2 Facing (Sizes XS-XL)
- <W>-1 Bandana (Stripes, Floral print, Polka dots, Denim)
- <A>-2 Hood (Center piece)
- <A>-3 Ear (Point)

The templates do not include seam allowances. Please refer to PSA and the cutting diagrams that are part of the instructions for each element.  
The templates include 14 sizes from XS-XL. Projects like belts, the included size range will be between 2 and 32. For fitting instructions, refer to PSA.

© 2014 Sewing Patterns Direct, LLC. All rights reserved. Sewing Patterns Direct, LLC. Printed in the USA.



1

2

3

4

5

6

7

8

9

10

11

12

13

14

15

16

17

18